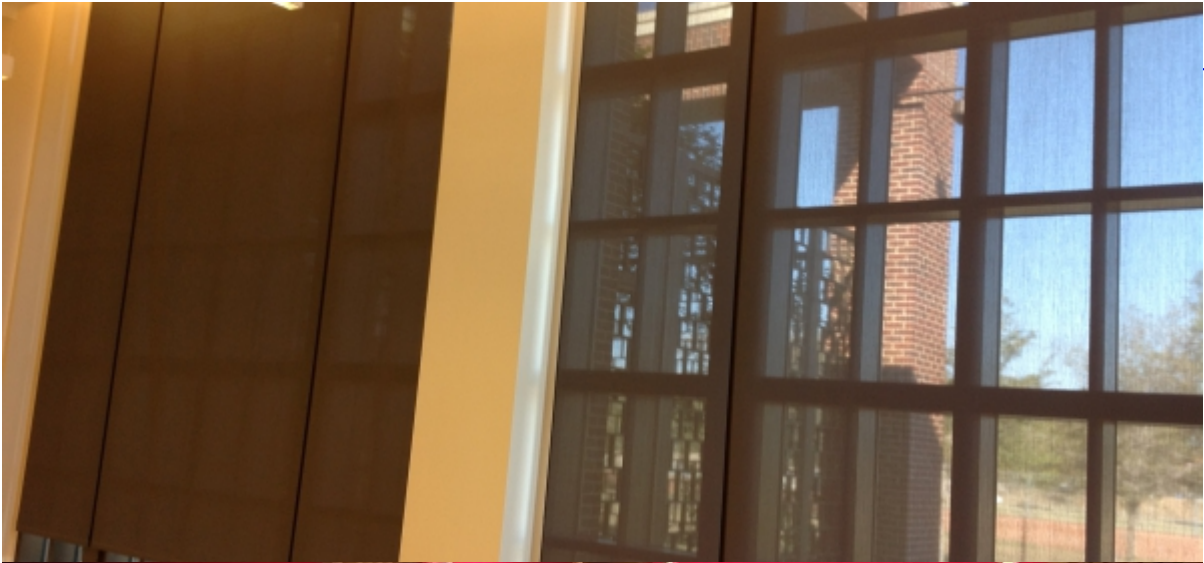
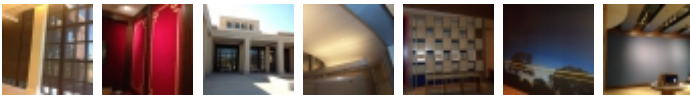
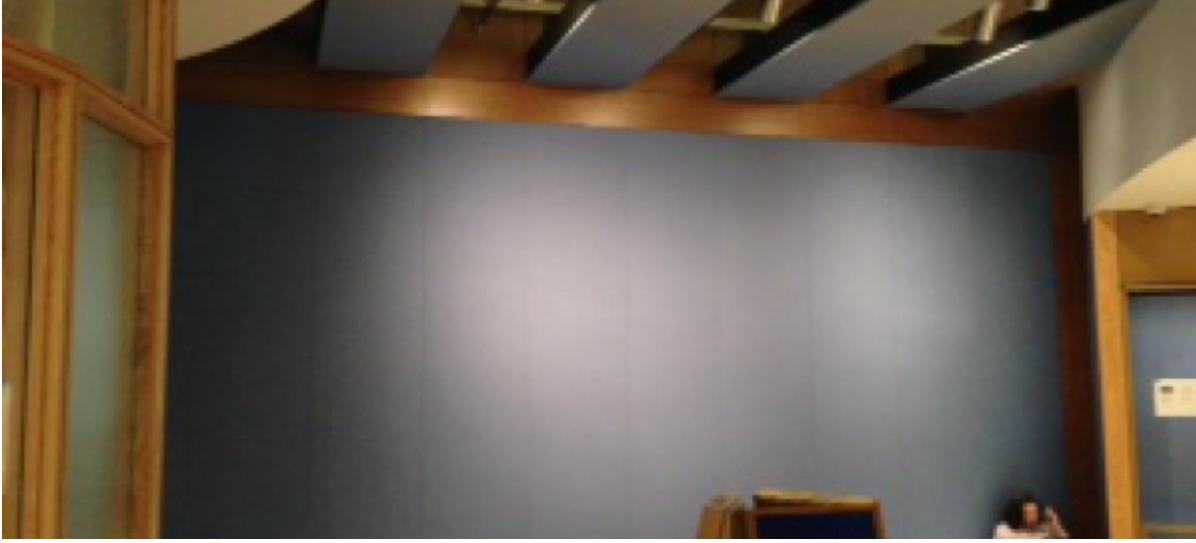


seum







PROJECT OVERVIEW

Marek Location

[Dallas](#)

Project Location

Dallas, TX

Project Sector

Educational Facilities

Services

[Fabric Panels & Stretch Systems](#)

[Window Treatments](#)

Architect

Robert A.M. Stern

General Contractor

Manhattan Construction & Treatment Design and Production
Inc.

The George W. Bush Presidential Library and Museum is located on the campus of Southern Methodist University in Dallas. We were very excited to be selected and a part of the George W. Bush Presidential Center - Museum Exhibit, a high profile installation here in Dallas/Fort Worth Area. We started Project in November 2012, and completed it April 2013.

Contacted by Design & Productions Inc., out of Lorton, Virginia, which has served the Museum Exhibit Industry since 1949, furnishing and installing “Interpretive Exhibitions for Museums, Visitors Centers, and Corporate Clients throughout the world.

D&P Inc. ask us to provide and install 1” & 2” Novawall Acoustical Walls & Ceiling Systems throughout the GWB Presidential Center - Museum Exhibit. Our Scope of Work, included over 3000 S.F. of Novawall acoustical walls and ceiling upholstery. One of the challenges we faced, included furnishing and installing over 1500 S.F. of “Custom Graphic Fabric Panels.” Part of this Process, included working with Amy Pink of “Mega Media,” out of New York City, she handled all the printing of the “Graphic Panels” for us. Our approval process, included furnishing “Proof Slicing” of the graphic panels, based on “Digital Files” provided by PRD Group, an Architectural Firm out of Chantilly, Virginia who specializes in the design of Museum Exhibits, and was acting as the “Owner’s Rep for this project. We successfully complete our Installations on time and without any critical punch list items.

Another challenge we faced halfway through the project; D&P Inc. asked us to furnish and install 1900 S.F. of additional 1” & 2” Novawall, in lieu of the specified Decoustic Panels; because of lead-time issues. PRD Group, the Architect who had designed the Museum Space, wouldn’t release us to proceed until we had provided a mockup of our fiberglass core that would meet the specifications of “Decoustics High Impact “ fiberglass. We had several obstacles to overcome. We found several companies that could provide us with “HIP” fiberglass, but it was either cost prohibitive or they couldn’t install “HIP” facing, on the specified Knauf Smooth Board fiberglass that was “Phenol & Urea” free. Finally, we found CMA Inc. a company who provided glass cloth facing for fiberglass acoustical panels. They provided us with “Tuff-Stuff” facing, it was 50” wide, came in 100 yard rolls, and it passed ASTM E-84. We provided a mockup for PRD Group, which they approved. At first, we thought we would spray glue to face of our fiberglass, but found it was flexible enough to stretch over fiberglass core and tuck into our Novawall perimeter track.

Our final obstacle, were the 1” Novawall/Decoustic acoustical panels in area 5.9, replicate of White House Mini Theater. Panels were a Design-Tex custom red velour fabric, pattern “V” 2957-301 color crimson. First problem, fabric was only 50” wide, width of wall was 68” wide x 136” tall. Also, these panels required a “Gold Trim” to be applied to face of Velour fabric, the cost of the Custom Gold Trim alone was \$1,500 dollars. We contacted a local Custom Drapery Workroom, to sew seam a 12”

flap on each side of 50" wide panel, and to attached the gold trim to face of fabric panel, which was able to hide the seam where we sewed flap. We were able to tuck finish fabric panels into Novawall perimeter track. You can see attached pictures of these panels.

By the time we were finished, we had installed our Novawall or Ceiling Systems in all 9 Areas/Venues of GWB Museum Exhibit, including ceilings & walls in both "A Charge to Keep & Decision Points Theaters." See attached pictures, showing profile of Novawall ¼" reveal midwalls and perimeter edge track, with black insert strips at ceilings of Area7 Decision Point Theater.

[DOWNLOAD PROJECT PROFILE](#)